

Installation Instruction Sheet for Endrail System

**READ THESE INSTRUCTIONS COMPLETELY BEFORE STARTING WORK.
IF YOU DON'T UNDERSTAND CALL 1-800-863-9791 FOR ASSISTANCE.**



5/16" x 3/4" Hex Bolt
quantity 2



5/16" x 7/8" Hex Bolt
quantity 8



5/16" Hex Nut
quantity 4



5/16" Hex Nut
quantity 8



5/16" Washer
quantity 16



5/16" Wing Nut
quantity 18



Top Rail
Midrail
quantity 2



Guardrail Post
quantity 2



J Hook
quantity 2

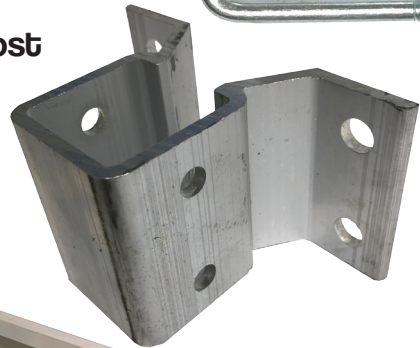


U-Bolt
quantity 4



Larger U-Bolt
quantity 2

Guardrail Post Bracket
quantity 2



Toeboard
quantity 1

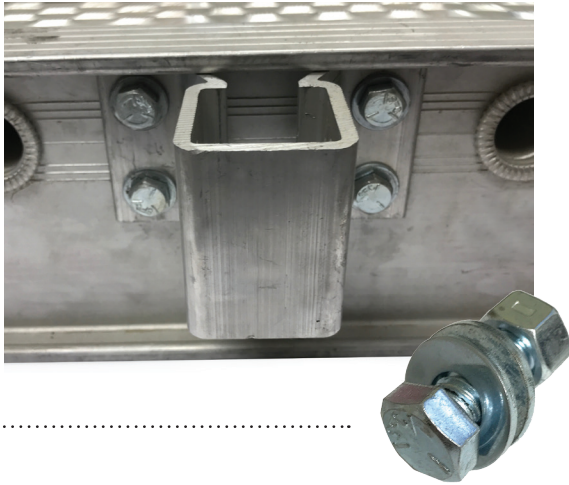
Tools Needed for Assembly - one 9/16" wrench & one 1/2" wrench



Instructions

Step 1

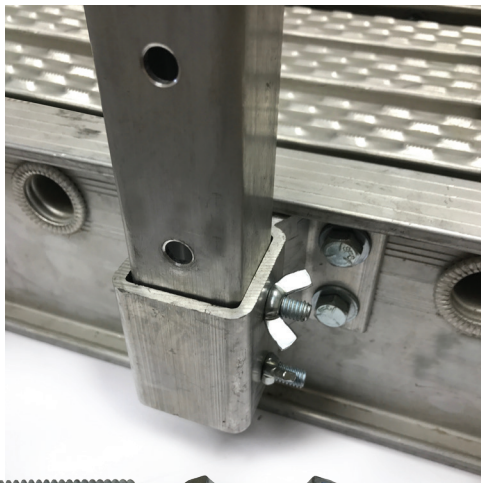
Attach the guardrail post bracket to the siderails with (4) hex bolts washer and nuts.



Step 2

Put guardrail post into the bracket and fasten with (2) long hex bolts and (2) wing nuts.

Repeat bracket attachment & pole placement on the other side.



Step 3

Attach the larger u-hooks with wing nuts leaving approximately 1/2" of thread showing.

Repeat on the other side.



Step 4

Attach the toeboard using the j-hooks and wing nuts.



Step 5

Install midrail through smaller u-bolt of guardrail post with (2) wing nuts as shown. Midrail will extend past guardrail posts marginally.



Repeat step 5 for top rail.

